

6

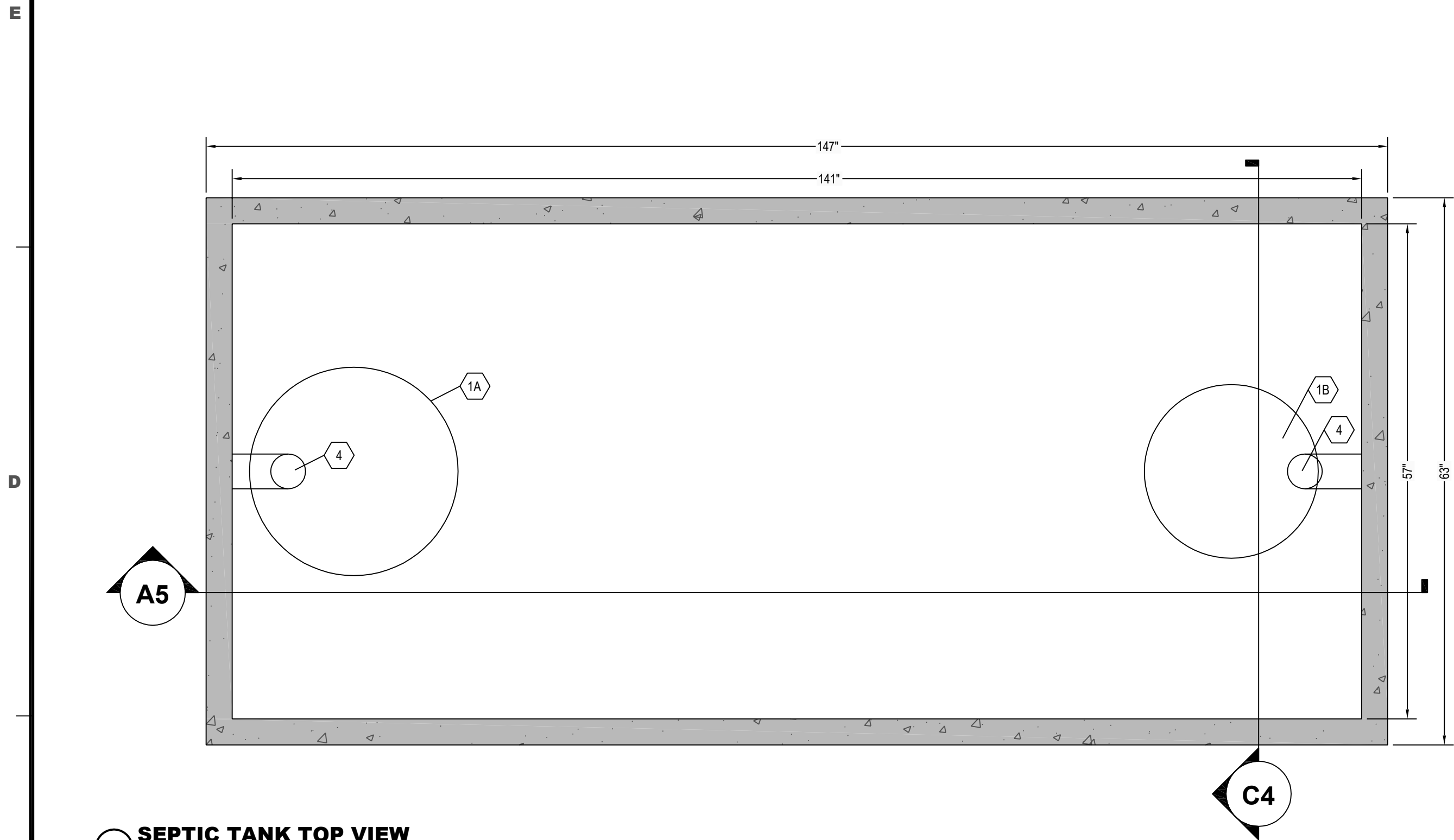
5

4

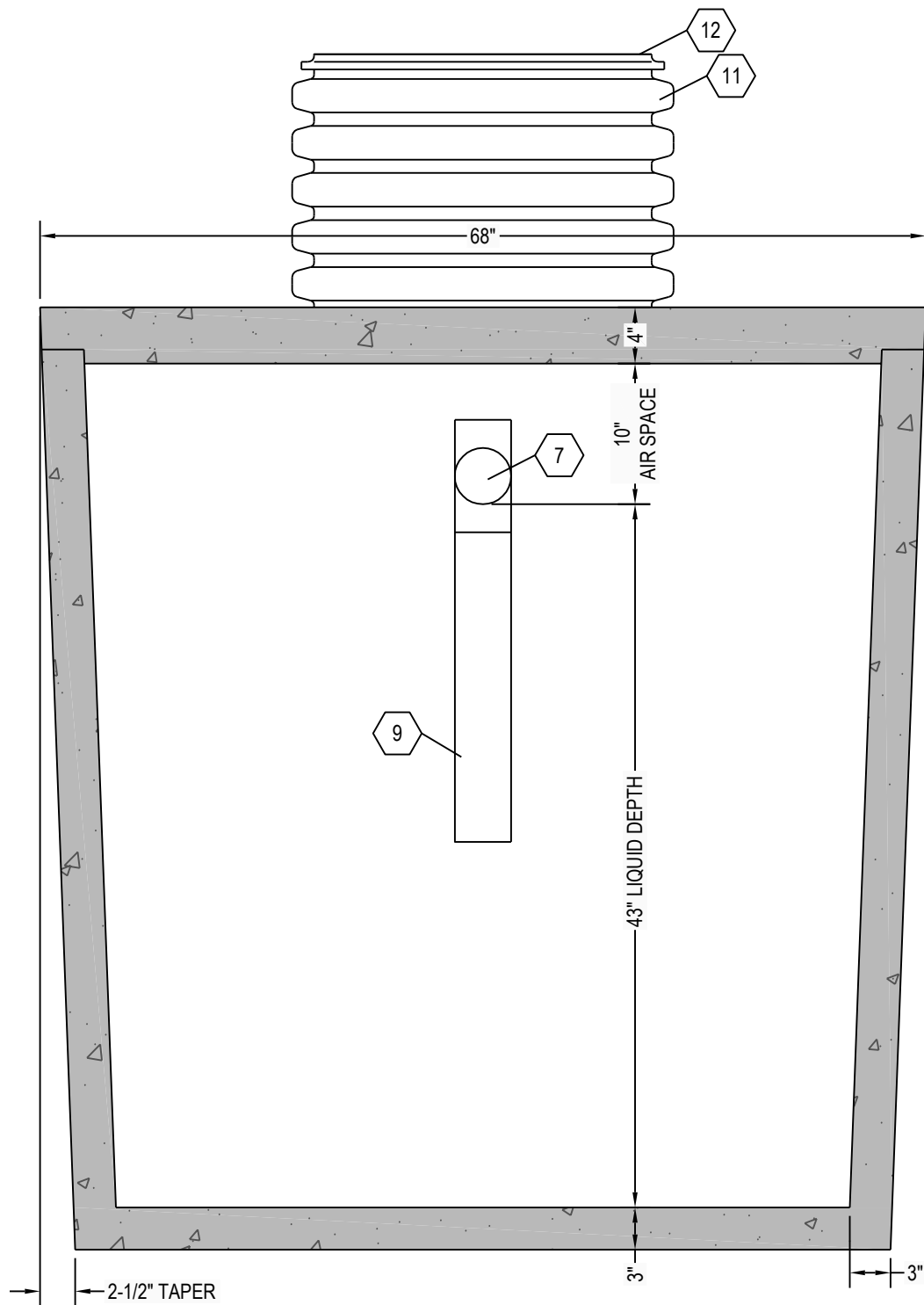
3

2

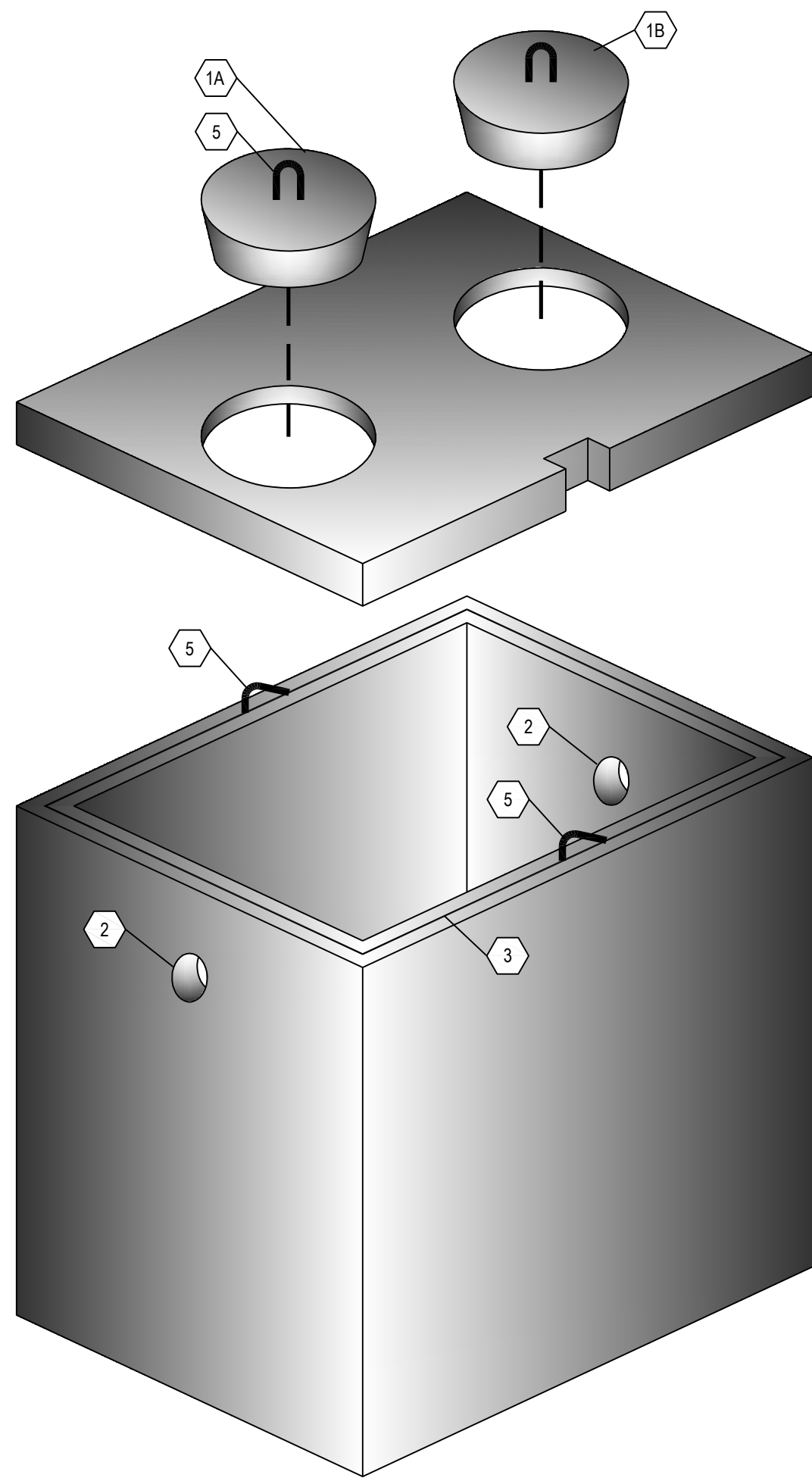
1



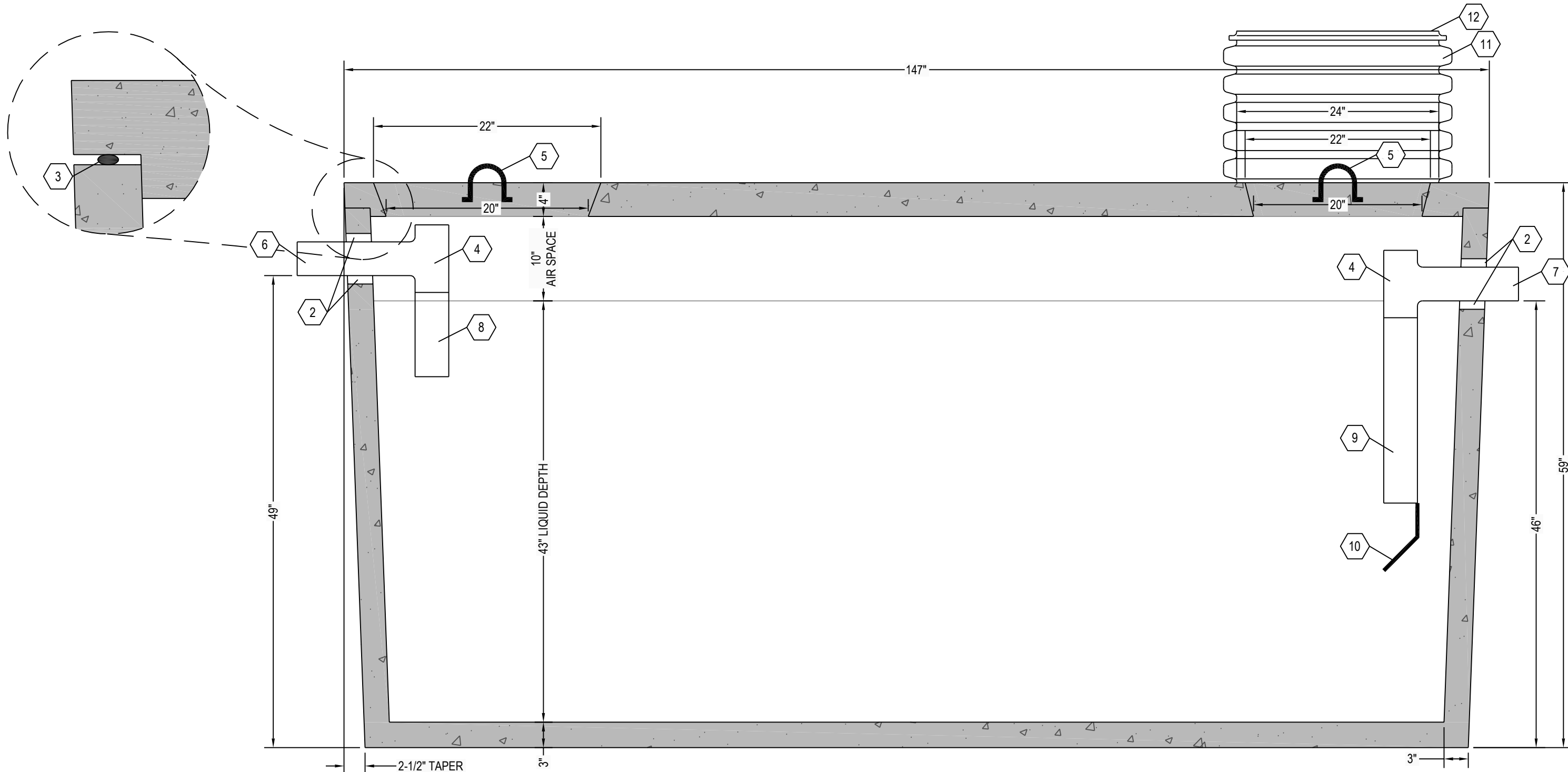
C6 SEPTIC TANK TOP VIEW
1" = 1"



C4 SEPTIC TANK SECTION VIEW
1" = 1"



A6 THREE DIMENSIONAL ISOMETRIC VIEW
NTS



A5 SEPTIC TANK SECTION VIEW
1" = 1"

DESIGN DATA:

- EARTH COVER = 3 FEET MAX
- ALLOWABLE WHEEL LOAD = 2500 LB MAX
- CONCRETE MINIMUM COMPRESSIVE STRENGTH = 5,080 PSI @ 28 DAYS
- LIFTING HOOKS ARE 3" DIAMETER, ASTM A36 COLD ROLLED STEEL
- SEPTIC TANK LID IS REINFORCED WITH 6 X 6 W8.0 X W8.0 WELDED WIRE FABRIC
- SEPTIC TANK BOTTOM AND SIDES ARE REINFORCED WITH 6 X 6 W10.0 X W10.0 WELDED WIRE FABRIC
- ALL CONCRETE SURFACES ABOVE THE LIQUID LEVEL ARE COATED WITH AIRLESS ASPHALT

CASTING WEIGHTS

WEIGHT OF LID: 2,725.0 LBS
WEIGHT OF TANK: 7,744.5 LBS
TOTAL CASTING WEIGHT: 10,469.5 LBS

SEPTIC TANK CAPACITY:

35.1 GALLONS PER INCH
STORAGE CAPACITY = 1532 GALLONS
TOTAL VOLUME = 1970 GALLONS

NOTE:

- EXTENSIONS ARE AVAILABLE FOR 24" DIAMETER POLY RISERS
- 24" DIAMETER CONCRETE GRADE RINGS OR CUSTOM RECTANGULAR RISERS WITH ALUMINUM HATCHES ARE AVAILABLE AS SUBSTITUTES TO POLY RISER AS SHOWN HEREON
- HIGH PRESSURE CLOSED END BOOT SEALS ARE AVAILABLE AS SUBSTITUTES TO RUBBER GASKET TYPE SEALS AS SHOWN HEREON

KEYNOTE INDEX

1A	24" DIAMETER MANWAY
1B	20" DIAMETER MANHOLE OPENING
2	TS-4PRO RUBBER GASKET SEAL BY TUF-TITE
3	MASTIC ROPE
4	SANITARY TEE AT INLET & OUTLET
5	3" DIAMETER LIFTING HOOKS
6	4" DIAMETER INLET (6" AVAILABLE UPON REQUEST)
7	4" DIAMETER OUTLET (6" AVAILABLE UPON REQUEST)
8	12" EXTENSION AT INLET
9	24" EXTENSION AT OUTLET
10	FLEXIBLE, NON-CORROSIVE POLYPROPYLENE GAS BAFFLE BY TUF-TITE AFFIXED WITH STAINLESS STEEL SCREWS
11	24" DIAMETER POLY RISER (18" HEIGHT TYP)
12	24" DIAMETER GAS TIGHT POLY SNAP CAP LID AFFIXED WITH STAINLESS STEEL SCREWS

*** ALL RENSSELAER SEPTIC TANKS ARE MONOLITHICALLY POURED ***



1211 NORTH WESTON STREET
P.O. BOX 70
RENSSELAER, INDIANA 47978
phone: (219) 866-5063
(800) 240-5123
fax: (219) 866-3894

PROJECT NAME
CLIENT NAME
ADDRESS

PROJECT NO: ---
FILE: 1500 GAL - SINGLE - NT.DWG
DRAWN BY: ASJM
CHECKED BY: PEW

TITLE:
**MANUFACTURER'S
DETAIL DRAWING**
1500 GALLON SEPTIC TANK
NO TRAFFIC

R-000

6

5

4

3

2

1